



## Strategy Objectives

The objectives are to generate consistent excess returns and effectively manage risk. The primary benchmark is the Russell 1000® Growth Index. The strategy employs a concentrated, low-turnover approach investing in predominantly large capitalization companies with proven records of increasing revenues, earnings, and cash flows on a consistent and sustainable basis.

## Strategy Facts

Inception Date 3/31/98  
 Assets in Strategy<sup>1</sup> \$561M  
 Assets in Composite \$300M  
 Portfolio Manager Nicholas C. Haffenreffer

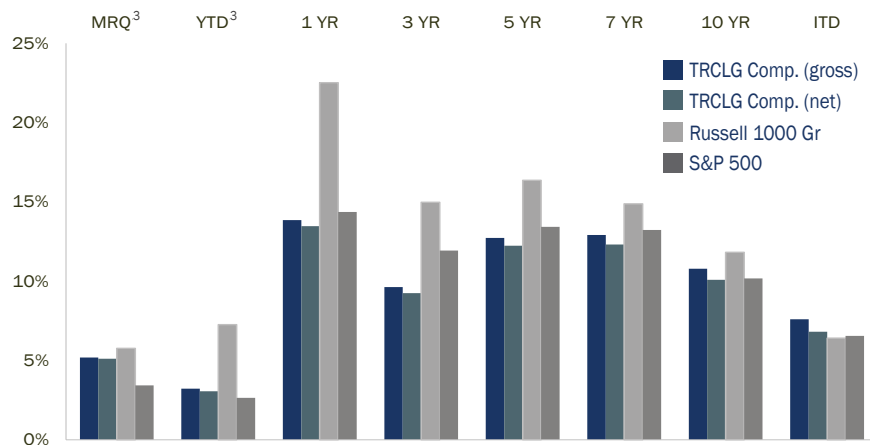
<sup>1</sup>Excludes \$99 million assets under advisement.

## Firm Facts

Founded 1972  
 Headquarters Bethesda, Maryland  
 Ownership 100% Employee Owned  
 Firm AUM<sup>2</sup> \$1.1B  
 Employees 17

<sup>2</sup>Firm assets under advisement total \$1.2 billion.

## Annualized Total Returns (%)



	MRQ <sup>3</sup>	YTD <sup>3</sup>	1 Year	3 Year	5 Year	7 Year	10 Year	ITD
TRCLG Comp. (gross)	5.2	3.2	13.8	9.6	12.7	12.9	10.8	7.6
TRCLG Comp. (net)	5.1	3.1	13.5	9.2	12.2	12.3	10.1	6.8
Russell 1000 Growth	5.8	7.3	22.5	15.0	16.4	14.9	11.8	6.4
S&P 500	3.4	2.6	14.4	11.9	13.4	13.2	10.2	6.6

<sup>3</sup> Most Recent Quarter (MRQ) and Year-to-date (YTD) not annualized. As of 6.30.2018. TorrRayResolute Concentrated Large Growth Inception: 3/31/98.

## Calendar Year Returns (%)

Year End	2017	2016	2015	2014	2013	2012	2011	2010	2009	2008
<b>TRCLG Comp. (gross)</b>	25.3	7.3	-0.9	10.5	33.3	21.1	4.3	11.5	32.2	-32.7
<b>TRCLG Comp. (net)</b>	24.9	6.9	-1.2	9.8	32.3	20.2	3.4	10.6	31.1	-33.2
<b>Russell 1000 Growth</b>	30.2	7.1	5.7	13.1	33.5	15.3	2.6	16.7	37.2	-38.4
<b>S&amp;P 500</b>	21.8	12.0	1.4	13.7	32.4	16.0	2.1	15.1	26.5	-37.0

## Portfolio Characteristics

Portfolio Statistics	Portfolio	Russell 1000 Growth	Sector Allocation	% Portfolio	% Russell 1000 Growth	Top 10 Holdings	% of Portfolio
Holdings	29	542	Info. Tech.	35	42	Apple Inc.	4.2
Avg. Mkt. Cap. \$B (wtd)	168	276	Health Care	24	13	Visa Inc. Class A	4.2
ROE (1 yr)	17%	17%	Cons. Disc.	10	18	Cooper Companies, Inc.	4.2
Turnover	24%	10%	Industrials	7	12	Fiserv, Inc.	4.1
EPS Growth	18%	12%	Financials	7	4	Charles Schwab	4.1
EPS Variability	27%	41%	Materials	6	2	O'Reilly Automotive	4.0
Standard Deviation	10%	10%	Energy	5	1	American Tower	4.0
Alpha	-1.8%		Real Estate	4	2	BioMarin Pharm.	3.9
Beta	0.9		Cons. Stpls.	0	6	Verisk Analytics	3.8
Up Market Capture	77%		Telecom.	0	0	Adobe Systems	3.7
Down Market Capture	98%		Utilities	0	0	<b>Total</b>	<b>40.3</b>
			Cash	2	0		

Figures are dollar-weighted averages, unless noted. Shaded Portfolio Statistics are 5-yr averages. Strategy holdings and sector allocations are subject to change and should not be considered a recommendation to buy or to sell any security. Past performance is not indicative of future results. See performance footnotes. Source: FactSet and Torray, LLC.

## Investment Team

### Nicholas C. Haffenreffer Portfolio Management and Research

Mr. Haffenreffer began his investment career in 1991. In 2010, Resolute Capital Management, a firm he founded in 1998, merged with Torray LLC. He is a member of the TorrayResolute investment team and the portfolio manager of the TorrayResolute Concentrated Large Growth Strategy.

27 years experience

20 years with TorrayResolute Strategy

### Jeffrey D. Lent Research

31 years experience

19 years with TorrayResolute Strategy

### James D. Bailey, CFA Research

23 years experience

19 years with TorrayResolute Strategy

### John R. Gallagher, CFA Research

8 years experience

4 years with TorrayResolute Strategy

## Contact

### Client Relations & Development

Hugh P. Tawney, *Director*

Breck Scalise, *Associate*

info@torray.com

855.753.8174

[www.torray.com](http://www.torray.com)

## About the Adviser

Torray LLC is independently owned and located in Bethesda, MD. Since 1972, the firm has managed investments for institutions, high net worth and individual investors. It offers value and growth strategies as mutual funds, separately managed accounts, and unified managed accounts.

## Philosophy

### We believe

- Sustainable earnings growth generates consistent excess returns
- Opportunity lies in the mispricing of risk
- Process is a better bet than information advantage or intuition

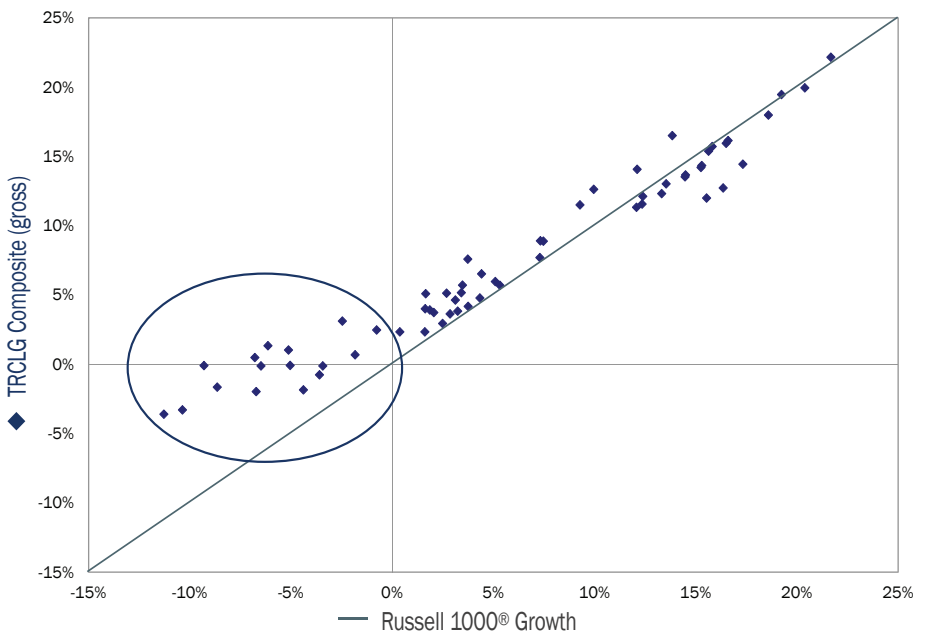
### We seek

- High-quality businesses with strong fundamentals
- Secular themes that support growth

### We are

- Long-term investors
- Risk-averse in order to maximize capital preservation
- Committed to our process

## 5-Year Rolling Returns VS. Benchmark



As of 6.30.2018. Based on quarterly gross returns. Source: Factset.

The Torray Resolute Concentrated Large Growth Composite includes all discretionary fee paying portfolios over \$100 thousand managed under the Torray Resolute large capitalization strategy. Prior to December 31, 2017, the composite account minimum was \$250 thousand. For comparison purposes, the composite is measured against the S&P 500 and the Russell 1000® Growth indices. The Russell 1000® Growth Index measures the performance of the large-cap growth segment of the U.S. equity universe. It includes those Russell 1000 Index companies with higher price-to-book ratios and higher forecasted growth values. The strategy focuses on equity investments in primarily large cap companies which TorrayResolute believes have sustainable growth profiles. Prior to July 1, 2010, this composite was known as the Concentrated Large Growth Composite and was managed by Resolute Capital Management LLC (Resolute). Resolute joined Torray when Torray purchased a majority share of Resolute on July 1, 2010.

Torray LLC claims compliance with the Global Investment Performance Standards (GIPS®).

Torray LLC is an independent registered investment adviser.

Results are based on fully discretionary accounts under management, including those accounts no longer with the firm. Composite performance is presented net of foreign withholding taxes on dividends, interest income, and capital gains. Withholding taxes may vary according to the investor's domicile. Past performance is not indicative of future results.

The U.S. Dollar is the currency used to express performance. Returns are presented gross of management fees and include the reinvestment of all income. Actual returns will be reduced by investment advisory fees and other expenses that may be incurred in the management of the account. The collection of fees produces a compounding effect on the total rate of return net of management fees. As an example, the effect of investment management fees on the total value of a client's portfolio assuming (a) quarterly fee assessment, (b) \$1,000,000 investment, (c) portfolio return of 8% a year, and (d) 1.00% annual investment advisory fee would be \$10,416 in the first year, and cumulative effects of \$59,816 over five years and \$143,430 over ten years.

The management fee schedule is as follows: 1.00% on assets up to \$5 million, 0.75% on next \$20 million, 0.50% on next \$175 million; 0.375% on next \$100 million, and 0.25% on balance. Actual investment advisory fees incurred by clients may vary.

The Composite was created June 1, 1999; prior to June 30, 2008, the Composite was known as the RCM Equity Composite. Prior to January 1, 2001, the minimum was applied on a per relationship basis, i.e. if a group of accounts held by the same person or family exceeded the minimum, as few as one account within the group could be included in the Composite.

A copy of the ACA Compliance Group verification report is available on request. To obtain a compliant presentation and/or the firm's list of composite descriptions, please contact the firm using the phone number listed below.